

NOTICE

Concrete Work
Wednesday, 9/7th – Thursday, 9/8th
7:00 AM – 5:00 PM each day

Please refer to the map in the next page.

PARKING

- No parking/loitering allowed in construction zone during dates above. Please follow “no parking” signs as they are most accurate.
- Any vehicles remaining in the work zone after 7:00 AM will be towed at owner’s expense.

ACCESS

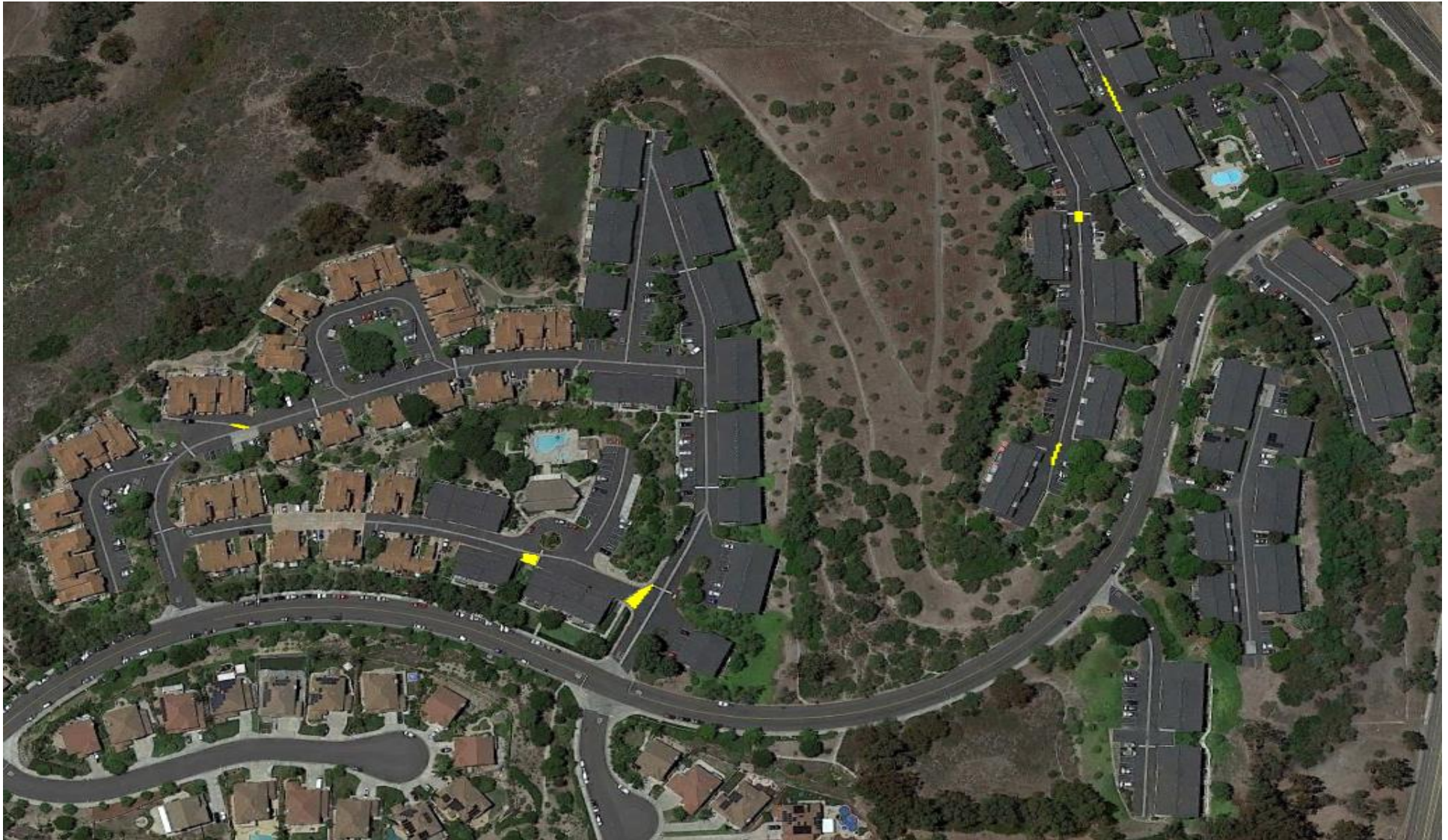
- Vehicle: restricted access allowed around construction. Please drive slowly and follow crew’s guidance.
- Pedestrian: limited access allowed on grass, dirt, asphalt, and sidewalks around work zone. Please follow crew’s guidance and directions around work zone.

GENERAL

- Do not enter any areas that are closed-off by tape, cones, or blockades.
- Do not move tape, cones, or blockades for any reason.
- We will open for full access as soon as the concrete has cured.

We will do everything in our power to minimize inconveniences.

Your cooperation is appreciated & will help us complete work in a timely manner



Quail Ridge HOA

Concrete Repair Map

Wednesday, 9/7th & Thursday, 9/8th

7:00 AM – 5:00 PM (each day)

Notes

- No parking around work zone. Please follow “no parking” signs.
- Restricted vehicle and foot traffic allowed around construction. Please follow crew’s guidance.
- Map is not drawn to scale.